

Test Report

No. : CE/2016/A1340

Date : 2016/10/17

Page : 1 of 9

MEGAWIN TECHNOLOGY CO., LTD.

7F-1, NO. 8, TAIYUAN 1ST ST., JHUBEI CITY, HSINCHU COUNTY 30288, TAIWAN



The following sample(s) was/were submitted and identified by/on behalf of the applicant as :

Sample Description : SOP SERIES
Sample Receiving Date : 2016/10/07
Testing Period : 2016/10/07 TO 2016/10/17

=====
Test Requested : As specified by client, to test Cadmium, Lead, Mercury, Cr(VI), PBBs, PBDEs, DBP, BBP, DEHP, DIBP contents in the submitted sample.

Test Method : Please refer to next page(s).

Test Result(s) : Please refer to next page(s).



Troy Chang, Manager - Tech
Signed for and on behalf of
SGS TAIWAN LTD.
Chemical Laboratory - Taipei

This document is issued by the Company subject to its General Conditions of Service printed overleaf, available on request or accessible at <http://www.sgs.com/en/Terms-and-Conditions.aspx> and, for electronic format documents, subject to Terms and Conditions for Electronic Documents at <http://www.sgs.com/en/Terms-and-Conditions/Termse-Documents.aspx>. Attention is drawn to the limitation of liability, indemnification and jurisdiction issues defined therein. Any holder of this document is advised that information contained hereon reflects the Company's findings at the time of its intervention only and within the limits of client's instruction, if any. The Company's sole responsibility is to its Client and this document does not exonerate parties to a transaction from exercising all their rights and obligations under the transaction documents. This document cannot be reproduced, except in full, without prior written approval of the Company. Any unauthorized alteration, forgery or falsification of the content or appearance of this document is unlawful and offenders may be prosecuted to the fullest extent of the law. Unless otherwise stated the results shown in this test report refer only to the sample(s) tested.

Test Report

No. : CE/2016/A1340

Date : 2016/10/17

Page : 2 of 9

MEGAWIN TECHNOLOGY CO., LTD.

7F-1, NO. 8, TAIYUAN 1ST ST., JHUBEI CITY, HSINCHU COUNTY 30288, TAIWAN



Test Result(s)

PART NAME No.1 : MIXED ALL BLACK BODY

PART NAME No.2 : MIXED ALL SILVER COLORED METAL (INCLUDING THE PLATING LAYER)

Test Item(s)	Unit	Method	MDL	Result	
				No.1	No.2
Cadmium (Cd)	mg/kg	With reference to IEC 62321-5 (2013) and performed by ICP-AES.	2	n.d.	n.d.
Lead (Pb)	mg/kg	With reference to IEC 62321-5 (2013) and performed by ICP-AES.	2	n.d.	16.8
Mercury (Hg)	mg/kg	With reference to IEC 62321-4 (2013) and performed by ICP-AES.	2	n.d.	n.d.
Hexavalent Chromium Cr(VI)	mg/kg	With reference to IEC 62321 (2008) and performed by UV-VIS.	2	n.d.	---
Hexavalent Chromium Cr(VI)(#2)	µg/cm ²	With reference to IEC 62321-7-1 (2015) and performed by UV-VIS.	0.10	---	n.d.
BBP (Butyl Benzyl phthalate) (CAS No.: 85-68-7)	mg/kg	With reference to IEC 62321-8/CD (2013). Analysis was performed by GC/MS.	50	n.d.	---
DBP (Dibutyl phthalate) (CAS No.: 84-74-2)	mg/kg	With reference to IEC 62321-8/CD (2013). Analysis was performed by GC/MS.	50	n.d.	---
DEHP (Di- (2-ethylhexyl) phthalate) (CAS No.: 117-81-7)	mg/kg	With reference to IEC 62321-8/CD (2013). Analysis was performed by GC/MS.	50	n.d.	---
DIBP (Di-isobutyl phthalate) (CAS No.: 84-69-5)	mg/kg	With reference to IEC 62321-8/CD (2013). Analysis was performed by GC/MS.	50	n.d.	---

This document is issued by the Company subject to its General Conditions of Service printed overleaf, available on request or accessible at <http://www.sgs.com/en/Terms-and-Conditions.aspx> and, for electronic format documents, subject to Terms and Conditions for Electronic Documents at <http://www.sgs.com/en/Terms-and-Conditions/Termse-Documents.aspx>. Attention is drawn to the limitation of liability, indemnification and jurisdiction issues defined therein. Any holder of this document is advised that information contained hereon reflects the Company's findings at the time of its intervention only and within the limits of client's instruction, if any. The Company's sole responsibility is to its Client and this document does not exonerate parties to a transaction from exercising all their rights and obligations under the transaction documents. This document cannot be reproduced, except in full, without prior written approval of the Company. Any unauthorized alteration, forgery or falsification of the content or appearance of this document is unlawful and offenders may be prosecuted to the fullest extent of the law. Unless otherwise stated the results shown in this test report refer only to the sample(s) tested.

Test Report

No. : CE/2016/A1340

Date : 2016/10/17

Page : 3 of 9

MEGAWIN TECHNOLOGY CO., LTD.



7F-1, NO. 8, TAIYUAN 1ST ST., JHUBEI CITY, HSINCHU COUNTY 30288, TAIWAN

Test Item(s)	Unit	Method	MDL	Result	
				No.1	No.2
Sum of PBBs	mg/kg	With reference to IEC 62321-6 (2015) and performed by GC/MS.	-	n.d.	---
Monobromobiphenyl	mg/kg		5	n.d.	---
Dibromobiphenyl	mg/kg		5	n.d.	---
Tribromobiphenyl	mg/kg		5	n.d.	---
Tetrabromobiphenyl	mg/kg		5	n.d.	---
Pentabromobiphenyl	mg/kg		5	n.d.	---
Hexabromobiphenyl	mg/kg		5	n.d.	---
Heptabromobiphenyl	mg/kg		5	n.d.	---
Octabromobiphenyl	mg/kg		5	n.d.	---
Nonabromobiphenyl	mg/kg		5	n.d.	---
Decabromobiphenyl	mg/kg		5	n.d.	---
Sum of PBDEs	mg/kg		-	n.d.	---
Monobromodiphenyl ether	mg/kg		5	n.d.	---
Dibromodiphenyl ether	mg/kg		5	n.d.	---
Tribromodiphenyl ether	mg/kg		5	n.d.	---
Tetrabromodiphenyl ether	mg/kg		5	n.d.	---
Pentabromodiphenyl ether	mg/kg		5	n.d.	---
Hexabromodiphenyl ether	mg/kg		5	n.d.	---
Heptabromodiphenyl ether	mg/kg		5	n.d.	---
Octabromodiphenyl ether	mg/kg		5	n.d.	---
Nonabromodiphenyl ether	mg/kg		5	n.d.	---
Decabromodiphenyl ether	mg/kg		5	n.d.	---

Note :

1. mg/kg = ppm ; 0.1wt% = 1000ppm
2. n.d. = Not Detected
3. MDL = Method Detection Limit
4. " - " = Not Regulated
5. "----" = Not Conducted

This document is issued by the Company subject to its General Conditions of Service printed overleaf, available on request or accessible at <http://www.sgs.com/en/Terms-and-Conditions.aspx> and, for electronic format documents, subject to Terms and Conditions for Electronic Documents at <http://www.sgs.com/en/Terms-and-Conditions/Termse-Documents.aspx>. Attention is drawn to the limitation of liability, indemnification and jurisdiction issues defined therein. Any holder of this document is advised that information contained hereon reflects the Company's findings at the time of its intervention only and within the limits of client's instruction, if any. The Company's sole responsibility is to its Client and this document does not exonerate parties to a transaction from exercising all their rights and obligations under the transaction documents. This document cannot be reproduced, except in full, without prior written approval of the Company. Any unauthorized alteration, forgery or falsification of the content or appearance of this document is unlawful and offenders may be prosecuted to the fullest extent of the law. Unless otherwise stated the results shown in this test report refer only to the sample(s) tested.

Test Report

No. : CE/2016/A1340

Date : 2016/10/17

Page : 4 of 9

MEGAWIN TECHNOLOGY CO., LTD.

7F-1, NO. 8, TAIYUAN 1ST ST., JHUBEI CITY, HSINCHU COUNTY 30288, TAIWAN



6. (#2) =

- a. The sample is positive for Cr(VI) if the Cr(VI) concentration is greater than $0.13 \mu\text{g}/\text{cm}^2$.
The sample coating is considered to contain Cr(VI)
- b. The sample is negative for Cr(VI) if Cr(VI) is n.d. (concentration less than $0.10 \mu\text{g}/\text{cm}^2$).
The coating is considered a non-Cr(VI) based coating
- c. The result between $0.10 \mu\text{g}/\text{cm}^2$ and $0.13 \mu\text{g}/\text{cm}^2$ is considered to be inconclusive - unavoidable coating variations may influence the determination.

7. The sample(s) was/were analyzed on behalf of the applicant as mixing sample in one testing. The above result(s) was/were only given as the informality value.

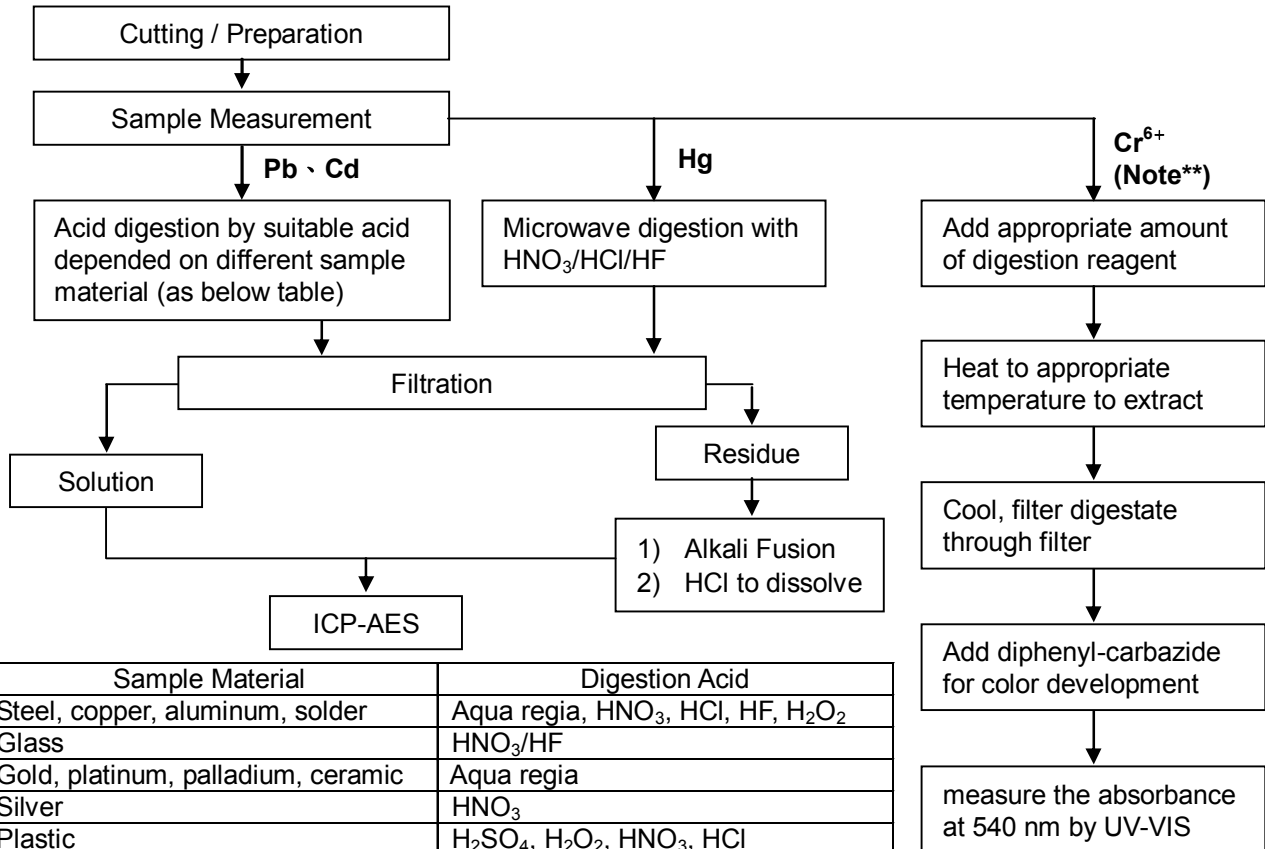


Analytical flow chart of Heavy Metal

These samples were dissolved totally by pre-conditioning method according to below flow chart.

(Cr⁶⁺ test method excluded)

- Technician: JR Wang
- Supervisor: Troy Chang



Sample Material	Digestion Acid
Steel, copper, aluminum, solder	Aqua regia, HNO ₃ , HCl, HF, H ₂ O ₂
Glass	HNO ₃ /HF
Gold, platinum, palladium, ceramic	Aqua regia
Silver	HNO ₃
Plastic	H ₂ SO ₄ , H ₂ O ₂ , HNO ₃ , HCl
Others	Added appropriate reagent to total digestion

Note** (For IEC 62321)

- (1) For non-metallic material, add alkaline digestion reagent and heat to 90~95 °C.
- (2) For metallic material, add pure water and heat to boiling.

MEGAWIN TECHNOLOGY CO., LTD.

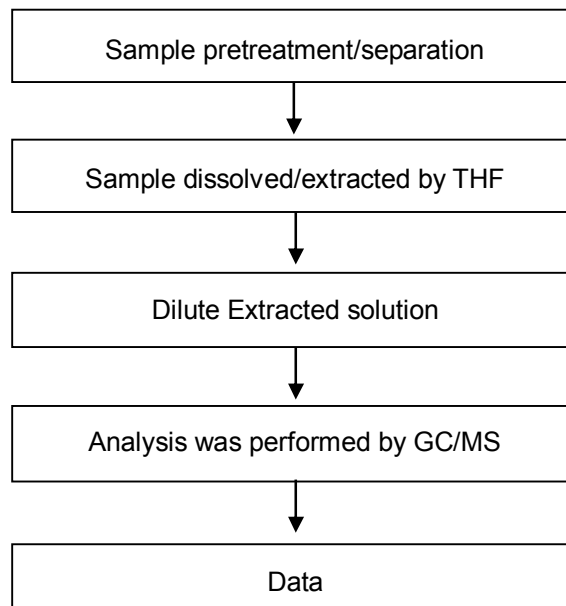
7F-1, NO. 8, TAIYUAN 1ST ST., JHUBEI CITY, HSINCHU COUNTY 30288, TAIWAN



Analytical flow chart - Phthalate

- Technician: Andy Shu
- Supervisor: Troy Chang

【Test method: IEC 62321-8】

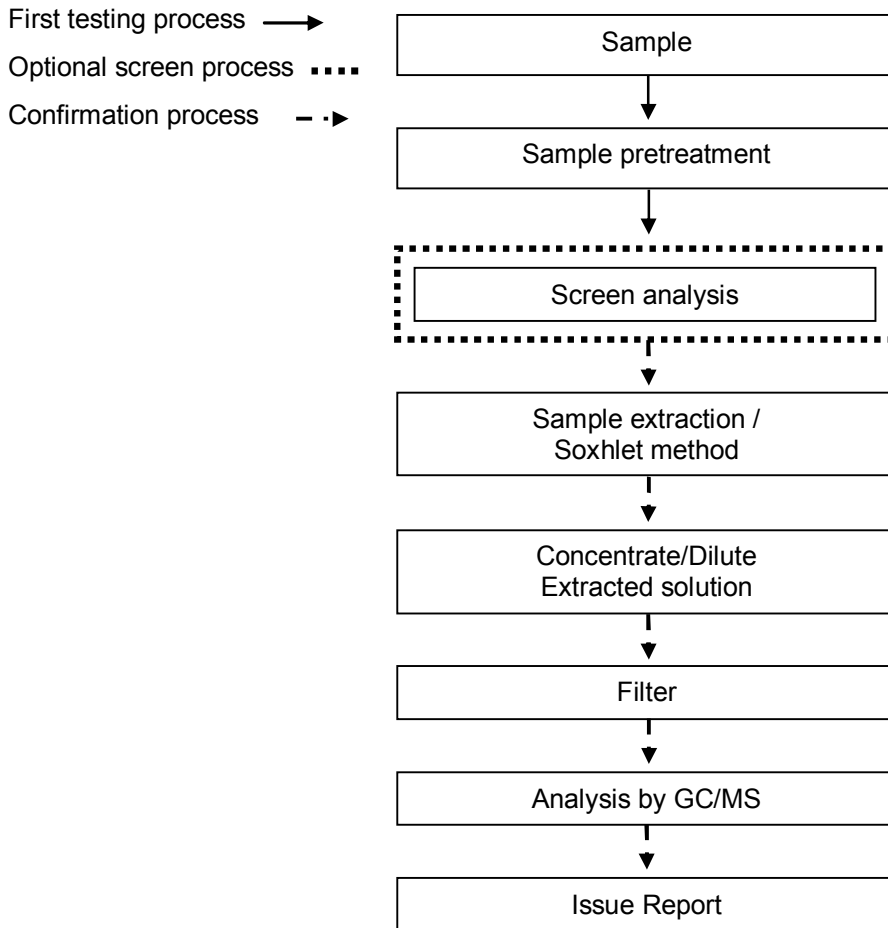


This document is issued by the Company subject to its General Conditions of Service printed overleaf, available on request or accessible at <http://www.sgs.com/en/Terms-and-Conditions.aspx> and, for electronic format documents, subject to Terms and Conditions for Electronic Documents at <http://www.sgs.com/en/Terms-and-Conditions/Termse-Document.aspx>. Attention is drawn to the limitation of liability, indemnification and jurisdiction issues defined therein. Any holder of this document is advised that information contained hereon reflects the Company's findings at the time of its intervention only and within the limits of client's instruction, if any. The Company's sole responsibility is to its Client and this document does not exonerate parties to a transaction from exercising all their rights and obligations under the transaction documents. This document cannot be reproduced, except in full, without prior written approval of the Company. Any unauthorized alteration, forgery or falsification of the content or appearance of this document is unlawful and offenders may be prosecuted to the fullest extent of the law. Unless otherwise stated the results shown in this test report refer only to the sample(s) tested.



Analytical flow chart – PBB / PBDE

- Technician : Yaling Tu
- Supervisor: Troy Chang



This document is issued by the Company subject to its General Conditions of Service printed overleaf, available on request or accessible at <http://www.sgs.com/en/Terms-and-Conditions.aspx> and, for electronic format documents, subject to Terms and Conditions for Electronic Documents at <http://www.sgs.com/en/Terms-and-Conditions/Termse-Document.aspx>. Attention is drawn to the limitation of liability, indemnification and jurisdiction issues defined therein. Any holder of this document is advised that information contained hereon reflects the Company's findings at the time of its intervention only and within the limits of client's instruction, if any. The Company's sole responsibility is to its Client and this document does not exonerate parties to a transaction from exercising all their rights and obligations under the transaction documents. This document cannot be reproduced, except in full, without prior written approval of the Company. Any unauthorized alteration, forgery or falsification of the content or appearance of this document is unlawful and offenders may be prosecuted to the fullest extent of the law. Unless otherwise stated the results shown in this test report refer only to the sample(s) tested.

Test Report

No. : CE/2016/A1340

Date : 2016/10/17

Page : 8 of 9

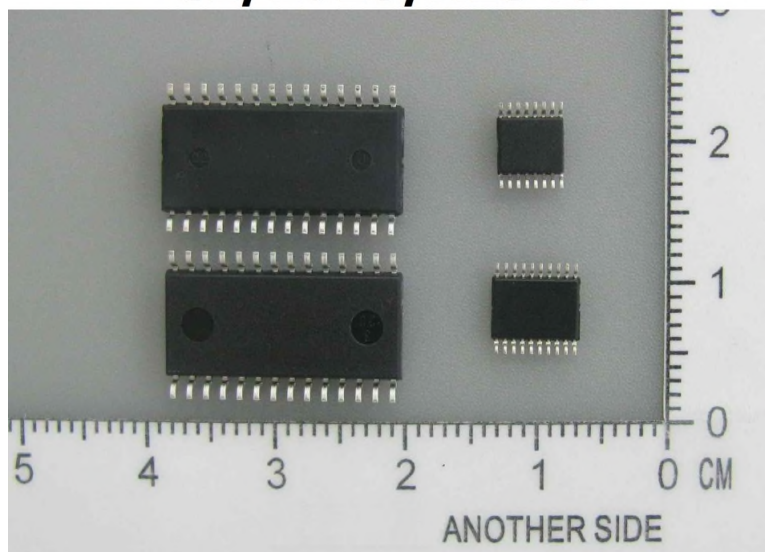
MEGAWIN TECHNOLOGY CO., LTD.

7F-1, NO. 8, TAIYUAN 1ST ST., JHUBEI CITY, HSINCHU COUNTY 30288, TAIWAN

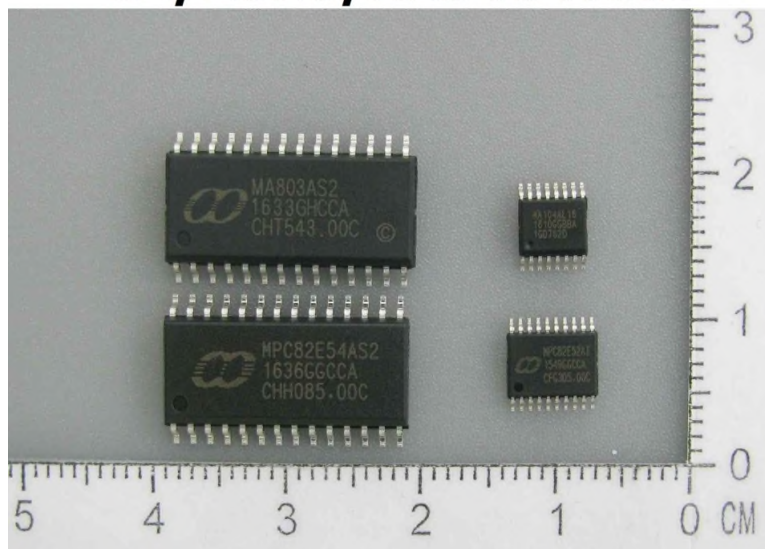


* The tested sample / part is marked by an arrow if it's shown on the photo. *

CE/2016/A1340



CE/2016/A1340 NO.1



This document is issued by the Company subject to its General Conditions of Service printed overleaf, available on request or accessible at <http://www.sgs.com/en/Terms-and-Conditions.aspx> and, for electronic format documents, subject to Terms and Conditions for Electronic Documents at <http://www.sgs.com/en/Terms-and-Conditions/Termse-Documents.aspx>. Attention is drawn to the limitation of liability, indemnification and jurisdiction issues defined therein. Any holder of this document is advised that information contained hereon reflects the Company's findings at the time of its intervention only and within the limits of client's instruction, if any. The Company's sole responsibility is to its Client and this document does not exonerate parties to a transaction from exercising all their rights and obligations under the transaction documents. This document cannot be reproduced, except in full, without prior written approval of the Company. Any unauthorized alteration, forgery or falsification of the content or appearance of this document is unlawful and offenders may be prosecuted to the fullest extent of the law. Unless otherwise stated the results shown in this test report refer only to the sample(s) tested.

Test Report

No. : CE/2016/A1340

Date : 2016/10/17

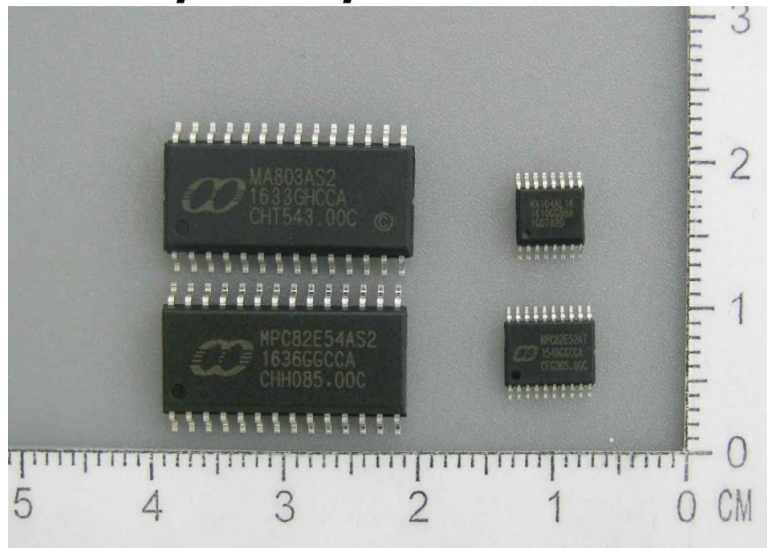
Page : 9 of 9

MEGAWIN TECHNOLOGY CO., LTD.

7F-1, NO. 8, TAIYUAN 1ST ST., JHUBEI CITY, HSINCHU COUNTY 30288, TAIWAN



CE/2016/A1340 NO.2



** End of Report **

This document is issued by the Company subject to its General Conditions of Service printed overleaf, available on request or accessible at <http://www.sgs.com/en/Terms-and-Conditions.aspx> and, for electronic format documents, subject to Terms and Conditions for Electronic Documents at <http://www.sgs.com/en/Terms-and-Conditions/Termse-Document.aspx>. Attention is drawn to the limitation of liability, indemnification and jurisdiction issues defined therein. Any holder of this document is advised that information contained hereon reflects the Company's findings at the time of its intervention only and within the limits of client's instruction, if any. The Company's sole responsibility is to its Client and this document does not exonerate parties to a transaction from exercising all their rights and obligations under the transaction documents. This document cannot be reproduced, except in full, without prior written approval of the Company. Any unauthorized alteration, forgery or falsification of the content or appearance of this document is unlawful and offenders may be prosecuted to the fullest extent of the law. Unless otherwise stated the results shown in this test report refer only to the sample(s) tested.